

Description

The DMP 692 Security Command LED keypad for the XR10 panel provides three 2-button Panic keys, three system status LEDs, three armed status LEDs, and ten zone LEDs. The 692 also contains a backlit keyboard with easy to read lettering, Command key arming, and an integral alert buzzer.

The 692 operates on 8.5 to 15 VDC at 30mA in normal mode and can draw up to 60mA of current maximum. You can install individual keypads on wire runs of up to 750' using 22 gauge wire or up to 1,500' using 18 gauge wire.

2-Button Panic Keys

The Panic key function of the 692 keypads lets users easily send a Panic, Emergency, or Fire report to the central station. The user must press and hold the two Select keys for two seconds until a beep from the keypad is heard. At the beep, the panel sends an alarm report to the central station with the following zone numbers:

19 - **Panic**, 29
- non-medical
Emergency,
and 39 - **Fire**.

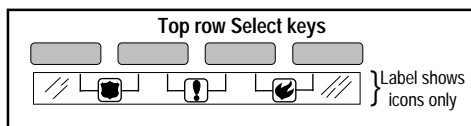


Figure 1: Panic key label placement

The Panic key function is active as soon as you apply power to the keypad. If the owner intends to use the Panic keys, install the supplied icon label below the top row of Select keys. See Figure 1.

Buzzer Operation

Each time a user presses a key on the 692, the buzzer emits a short tone. After the user performs a successful keypad operation, such as disarming the system, the buzzer emits a 1/2 second tone. If the operation is not successful, the buzzer emits four short tones. This alerts the user to perform the function again.

During trouble conditions, the keypad emits a steady tone to alert the user. Pressing any key silences the buzzer.

Harness Color Code

Red - Auxiliary Power	Yellow - Transmit Data
Green - Receive Data	Black - Ground

Keyboard Backlighting

The keyboard on the 692 lights anytime a key is pressed or the alert buzzer sounds making it easy for a user in a darkened room to enter their code or perform a command function.

Additional Power Supply

If current draw for all keypads connected to the panel exceeds the panel's output, you can provide additional current by adding an auxiliary power supply.

Base Information

The 692 is made up two parts: the front, containing the circuit board and other components, and the base. To remove the base, insert a flat screwdriver into one of the openings on the bottom and **gently twist** it while pulling the halves apart. Repeat with the other opening.

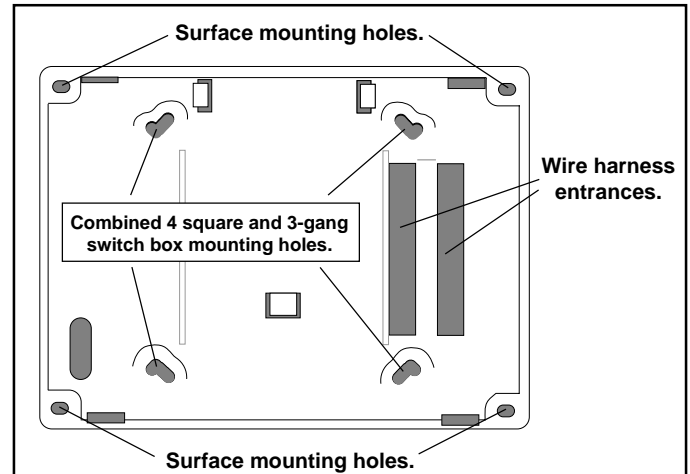
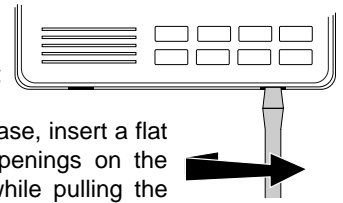


Figure 2: Base mounting locations

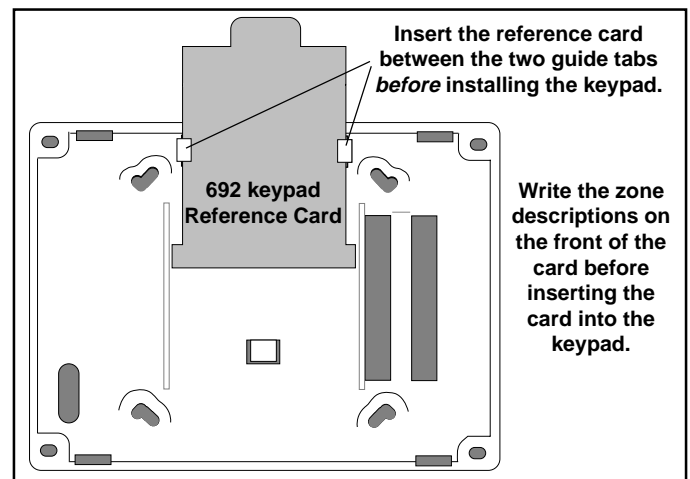


Figure 3: Reference Card installation

984 COMMAND

Enter 984 + COMMAND to allow the panel to pick up the phone line as a remote connect from the Remote Access™ downloader is being attempted.

Enter 984 + COMMAND plus up to 15 digits for the phone number if you are attempting to contact the Remote Access™ downloader from the XR10 panel.